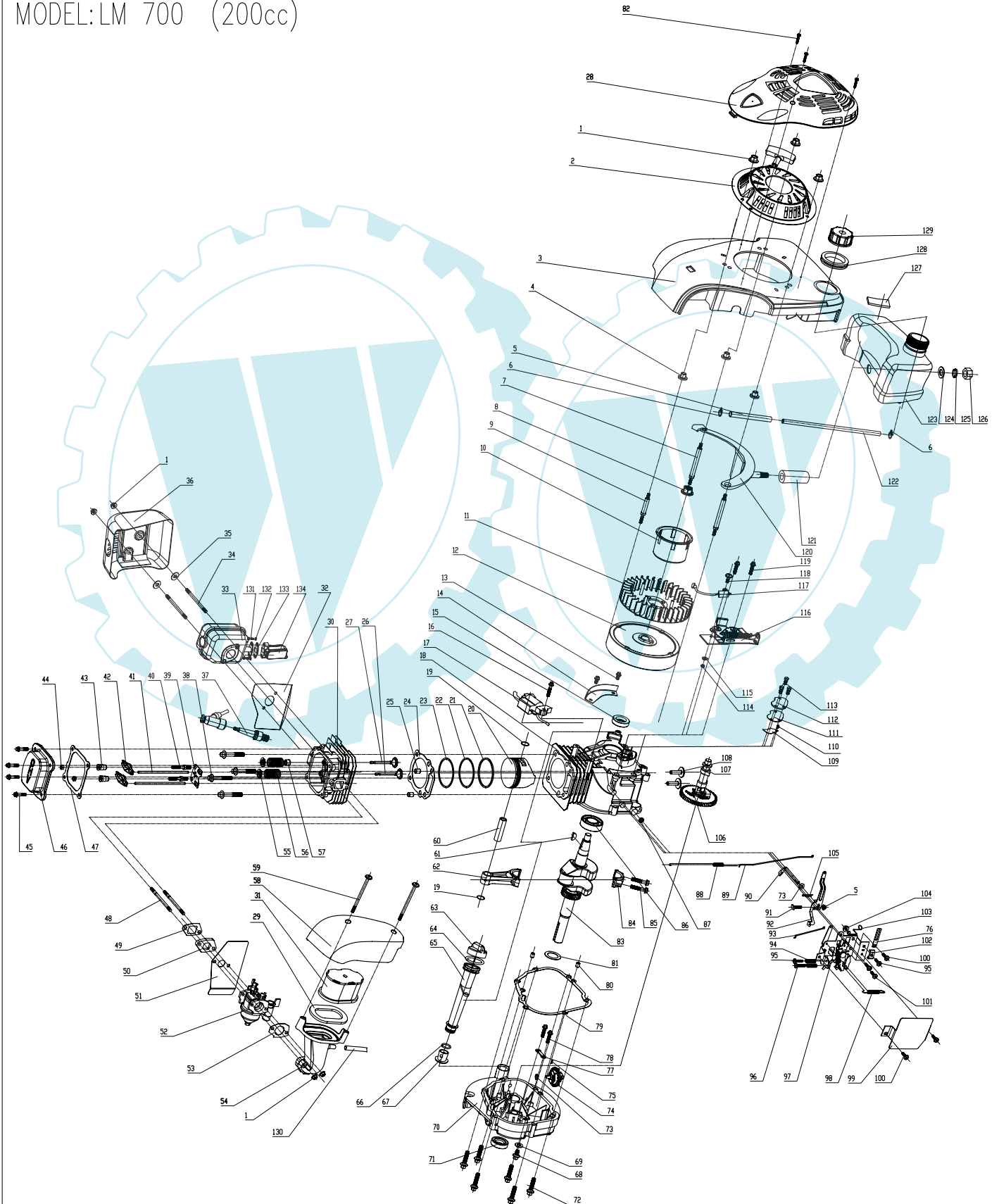




Tonino Lamborghini

TECNOLOGIA

MODEL: LM 700 (200cc)





Tonino Lamborghini

TECNOLOGIA

LM 700 (200cc) gasoline engine detailed list of specifications

No.	Parts code No.	NAME	Quantity	No.	Parts code No.	Name	Quantity	No.	Parts code No.	Name	Quantity
1	GB/T6177.1	Nut M6	8	55		Valve spring cap	2	109		siphon	1
2		start system	1	56		Valve spring	2	110		Nut bolt M3X5	1
3		wind scooper parts	1	57		Parts of the pipe sealed by oil	2	111		Cover plate cushion of the siphon	1
4		Bushing 1	2	58		Air-cleaner cover	2	112		Cover plate of the siphon	1
5		Shield tube	1	59		Nut bolt M5X70	2	113		Bolt M5A12	3
6		Card hoop	2	60		Sucker	1	114		Nut M5	1
7		Bolt	2	61		Key 4.046.5416	1	115		Gasket 5	1
8		Flywheel nut	1	62		Perch liner	1	116		The brake equip assembly	1
9		Ignition plate position	1	63		Machine oil ruler	1	117		Turnoff switch	1
10		Parts of the starting crank jaw covering grate	1	64		Check cap D model loop	1	118		Nut bolt M5X16	1
11		plate Blast fan	1	65		Oil road assembly	1	119		Bolt M5A20	2
12		Flywheel parts	1	66		Oil model hoop 20A265	1	120		Parts of bracket of the oil case	1
13		Nut bolt M6X20	2	67		oil tube framework	1	121		Gum set	1
14		Chimney aspirator	1	68		oil draining plug screw	1	122		Intake oil tube	1
15		Parts of the bracket sealed by oil	1	69		Sealed cushion	1	123		Oil case	1
16		Bolt M6A25	1	70		Down crank case parts	1	124		Gasket 8	1
17		Ignition loop parts	1	71		Parts of the bracket sealed by oil	1	125		Gasket 8	1
18		Up crank case parts	1	72		Bolt M8A50	6	126		Nut M8	1
19		Sucker spring	2	73		Flap gasket 6	2	127		Reduce vibration cushion	1
20		Ram	1	74		Adjust speed parts	1	128		Reduce vibration cushion of the oil case	1
21		Group of oil ring	1	75		cylindrical pin 2h6A6	1	129		Parts of cover of the fuel case	1
22		The second ring of the piston	1	76		Exhaust-oil tube clip	1	130		Rubber soft tube	1
23		The fristing of the piston	1	77		Adjust speed plate	1	131		Bolt M6A16	2
24		Cylinder cushion	1	78		Bolt M6A12	2	132		Gasket 6	2
25		Cylinder cap dowel	2	79		Crank case cushion	1	133		Gasket seal	1
26		Out valve	1	80		Crank case dowel	2	134		Exhaust Gas Recirculation	1
27		In valve	1	81		Crank timing gear cushion	1				
28		Starting pull-plate casing	1	82		screw nail ST4.2A16-C-H	1				
29		Gasket	1	83		Crank	1				
30		Cover of the cylinder	1	84		Cover of the perch	1				
31		Filter core	2	85		Perch bolt	2				
32		Baffle wind plate	1	86		Bearing 205	1				
33		Muffler parts	1	87		Sealed by oil parts	1				
34		Double screw bolt of the muffler	2	88		idle speed spring	1				
35		Graphite cushion 2	1	89		Gasoline throttle drag bar	1				
36		Out sump parts	1	90		Angular section drag bar	1				
37		Spark plug parts	3	91		Fastening bolt	1				
38		Bolt of the cover of cylinder	1	92		Gasoline throttle oscillating arm	1				
39		Pushing bar retainer	4	93		Choke valve drag bar	1				
40		Rocker arm double screw ball	1	94		Adjust compress spring	2				
41		Crossbar	2	95		Nut bolt M5A20	2				
42		Radius arm	2	96		Nut bolt M5A35	1				
43		Nut of the radius arm	2	97		Parts of the adjust speed plate	1				
44		Fastening nut	1	98		Adjust speed spring	1				
45		Bolt M6A16	4	99		Adjust speed baffle plate	1				
46		Cover of the cylinder	1	100		Nut bolt M5A10	3				
47		Filter of the cover of cylinder	2	101		Nut bolt M6A22	2				
48		Double screw bolt of the muffler	1	102		Compress plate	1				
49		Connect plate filler of the carburetor	1	103		Prop up a pole of oil tube	1				
50		Connect plate of the carburetor	1	104		Nut M5	1				
51		Filter of the carburetor	1	105		Steel wire baffle turn	1				
52		Caruretor parts	1	106		Compress spring	1				
53		Filter of the air cleaner	1	107		Shaft of the male rotor	1				
54		Air cleaner support	1	108		Crossbar	2				